

# COUPLERS ACB+

Now free to move!



CLASSIC MECHANICAL



TILTROTATOR NOX INSIDE



CLASSIC HYDRAULIC



ROTATING AOTO+



CLASSIC HYDRAULIC S+



± 90° TILTING WITH POWER UNIT



A comprehensive, multi-system range to boost your productivity

**ACB+**  
Free your productivity



## Why choose ACB+ for your attachments?



A firm belief in our products offering efficient and robust attachments to boost your productivity.



Easy-to-use products ensuring the safety and comfort of operators.



A comprehensive and customised range of innovative and patented products.





Individual support from our 100% France-based team.



Responsive customer service with next-day spare parts delivery to your dealer before noon.

# Contents

<b>New Range</b>	<b>4</b>	<b>Tiltrotators <sup>nox inside</sup> Free Couplers</b>	<b>18</b>
Your couplers are now free to move	4		
A firm belief in our products	5	<b>Choosing the Right Type of Quick Coupler for Your Operations</b>	<b>21</b>
<b>The Morin Original System</b>	<b>6</b>		
<b>Classic Couplers</b>	<b>7</b>	<b>Couplers as Well as Tools</b>	<b>22</b>
<b>Classic Couplers </b>	<b>11</b>	A vast range of tools for all quick coupling systems	22
<b>Tilting Free Couplers</b>	<b>13</b>	CSR policy	22
<b>Rotating Free Couplers </b>	<b>15</b>	Our remote and in-the-field customer service	23
		Where to find our products?	23

# NEW RANGE

THERE ARE VARIOUS TOOLS ON OUR ACBPLUS.COM WEBSITE TO HELP YOU CHOOSE

## Your couplers are now free to move

For a number of years now, there has been a growing market for **increasingly mobile tools and couplers** at the end of excavator arms. The way of approaching sites has changed, and today **vehicles perform work right up to the finishing touches**.

ACB+ is now offering a **comprehensive range of couplers that are free to move**, not only with its flagship product, the **Morin Original system** but **also with CW Verachttert, Nordic S Standard and Original Liebherr SW systems** for machines up to 50 tons.



Classic, tilting, rotating couplers or tiltrotators, you need to make an informed choice.

In fact, **each added function offers advantages as well as drawbacks**, which need to be considered to configure the ideal machine/tool pairing, enabling you to use your tool in the right position for your work, at all times.

Within this range of possible attachments for your machines, **ACB+ offers you its expertise and advice as part of a comprehensive approach**, helping you define the most appropriate solution for your needs in line with your machine's capabilities.

**You need the product that meets your needs**, and not always the most expensive and most highly-equipped.



# A firm belief in our products

## Efficient and reliable products

We believe that **our products must always be 100% efficient**. So optimum compatibility and fine-tuning are never forgotten. All **our products adhere to the original kinematics and load charts** and are **functionally inspected on completion of production** with particular attention paid to welds and their finishes. Robotic welding gives our products **consistent quality and optimum strength**.

## Robust engineering for long-lasting products

To guarantee the high-quality design of all our products, **our design department uses 3D CAD software combined with an efficient technical data management system**.

## Incorporation of reliable solutions

We incorporate products made by third parties to provide a number of the coupler range's functions. **ACB+ selects these products on the basis of their physical performance, as well as their durability and reliability**. The proposed solutions for tilting power units, for example, have been tried and tested for many years.

## Safety is a key priority for us

We are committed to ensuring maximum safety for our customers.

**We comply strictly with all applicable standards** and recognise the impact we can have on improving operators' lives at work and their protection. In addition **we develop and patent product improvements, such as the safety system on our locking cam: the form-lock**. This system is used on all our Morin Original system couplers and is exclusive to ACB+. **It holds the tool firmly on the coupler** and prevents unintentional unhitching. Our couplers also have other functions allowing the tool to be held play-free.



## Instructions and manuals

Our products are supplied with **the technical documentation needed to install and use them properly**.



# THE MORIN ORIGINAL SYSTEM



**FOR A PLAY-FREE COUPLER/  
TOOL CONNECTION**

## A well-deserved reputation

Designed by the Morin brothers in the nineties, ACB+ has developed **the Morin Original coupling system for use with hydraulic excavators from 0.8 tons to 50 tons** in eight sizes known as "modules".

These couplers are **patented and compliant, in terms of safety, with the latest EN474-1 and 5 and ISO13031 standards.**

As a component manufacturer in its own right, ACB+ offers you **couplers** compatible with your machine **in accordance with the manufacturer's kinematics** and **an extremely wide range of robust and reliable tools** designed and approved by our design department.

**Control devices for hydraulic quick couplers are available** for your machine and we endeavour to provide you with the best advice and support to ensure completely safe incorporation of our products into your machine.

ACB+ guarantees the compatibility of all its tools, which it has been producing for more than ten years.

However, should our couplers have tools made by third parties attached, ACB+ is unable to guarantee compliance with safety standards. The use of such tools could seriously compromise safety, when interacting with the safety devices on our couplers, in terms of the dimensions of the connection, collisions or simply the intrinsic mechanical strength of tools that may be supplied by third parties.

ACB+ presents the features of **its classic couplers**, as well as its latest products, its **free couplers**: Tilting couplers, ROTO+ rotating couplers and tiltrotators<sup>nox inside</sup>.

# CLASSIC COUPLERS

Efficient, simple and reliable  
couplers available with a mechanical  
or hydraulic locking system.

AVAILABLE IN HYDRAULIC OR  
MECHANICAL VERSIONS



## The advantages of the Morin Original system mechanical coupler

- + Patented dual safety system
- + Functional play compensation
- + Easy colour-coded identification
- + Tools in the Morin Original system are automatically locked without leaving the cab
- + Compatible with the continuous use of a hydraulic breaker

## The advantages of the Morin Original system hydraulic coupler

- + Patented dual safety system
- + High strength, one piece dual-action actuator
- + Functional play compensation
- + Tools in the Morin Original system are attached without leaving the cab
- + Easy colour-coded identification
- + Compatible with the continuous use of a hydraulic breaker





## Easy module identification

We use **one colour code per module**, this colour is applied to one element of the coupler and to the corresponding key. This is particularly appreciated in multi-module installations.

**The module (x) is also engraved on couplers and tools**, and is clearly visible: M(x)S for mechanical couplers, H(x)S for hydraulic couplers, M(x) for tools.



## Robust, reliable and play-free

Mechanical and hydraulic couplers are **steel castings**, which are perfect for long-term use.

The **locking device with play compensation by means of a cam**, ensures that the tool is held perfectly on the coupler.

Thanks to these devices and precise and generous contact surfaces, **it is possible to continuously use a hydraulic breaker** on these couplers.

## Easy to use and a dual safety system

### Mechanical couplers

Mechanical couplers are **automatically locked and secured from the cab** by means of a simple tool hitching movement by the excavator arm. The tool is gripped by hooks and then locked by a rotating movement of the coupler towards the tool.

A form on the bucket releases the coupler cam, which locks it in position and, in the same movement, **the safety device prevents the cam recoiling. A mechanical "hitching complete" indicator light is visible from the cab.**

Mechanical couplers are **unlocked** in a single step using the key: the safety device is raised and the cam is then unlocked in the same movement.

**With the Morin Original system, you only climb down from the machine once** in a complete hitching / unhitching cycle.

**Dual locking safety system:** The Morin Original system mechanical coupler has a dual safety system, comprising:

- An automatically activated **stop** that prevents any risk of the cam recoiling – a patented system,
- **A cam equipped with the patented form-lock system** that prevents any risk of unlocking, even if the safety stop fails.





## Hydraulic couplers

The tool is hitched and unhitched from the cab.

Simply pressing two buttons on our control unit at the same time places the coupler either in a hitching or unhitching position.

An audible **beep** and a warning light accompany these statuses on the unit and **there is a mechanical locking indicator on the quick coupler, which is visible from the cab.**



In the event of hydraulic issues with the hoses supplying the coupler, it can be **unlocked with a standby key**, this ensuring continuity of service, while repairs are carried out.

**Dual locking safety system:** The Morin Original system hydraulic coupler has a dual safety system, comprising:

- **Return springs** ensuring the cam is held in position, thereby keeping play to a minimum,
- **A dual-action hydraulic actuator**, the rod of which is under constant pressure, holding the cam in the locked position,
- **A cam equipped with the patented form-lock system** that prevents any risk of accidental unlocking if the two previous devices fail.



# Classic coupler range

MODULE	TONNAGE	MECHANICAL VERSION	HYDRAULIC VERSION
M0	800 kg – 2 t	M0S	-
M1	2 t – 3.5 t	M1S	H1S
M2	3.5 t – 5.5 t	M2S	H2S
M3	5.5 t – 7.5 t	M3S	H3S
M4	7.5 t – 10 t	M4S	H4S
M5	10 t – 15 t	-	H5S*
M6	15 t – 24 t	-	H6S*
M7	24 t – 35 t	-	H7S*
M7+	35 t – 50 t	-	H7S+*

\*For machines equipped a long arm, an optional electronic display kit is available for the H5S and H6S, this option is standard for H7S and H7S+ couplers.

# Reversibility

## Reversible kit

Available for all Morin Original system tools, from modules 0 to 4, the reversible kit is only available in a mechanical version and is an intermediate element that allows the tool to be changed over to a shovel in a few steps.

Like the classic coupler, the mechanical reversible kit has features of the Morin Original system, thus hitching and unhitching steps remain the same as for your classic mechanical or hydraulic coupler.

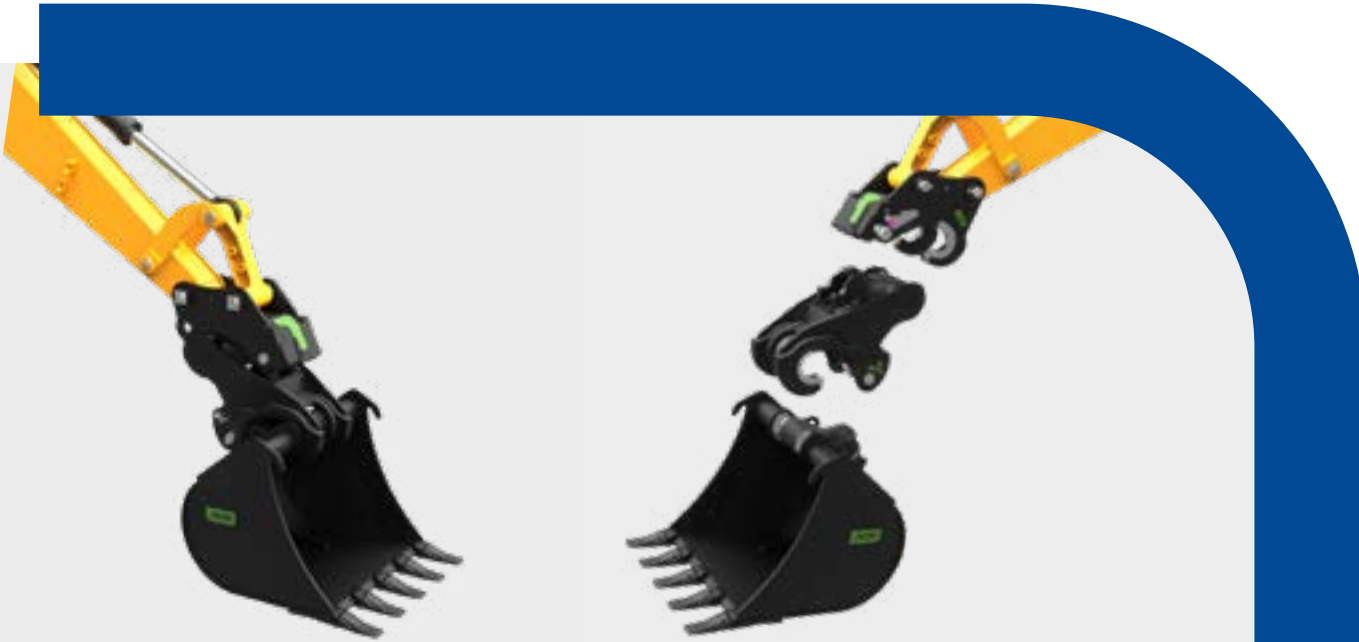
## Rotating coupler

Thanks to 360° rotation, perform up to 80% of the work of a tiltrotator at a far lower cost. Available in hydraulic or mechanical versions. **Page 15**



## Tiltrotator

The multi-function coupler with 360° rotation and ±50° tilt combines manoeuvrability with productivity. Available in a hydraulic version. **Page 18**



# CLASSIC COUPLERS **S+**

Efficient, simple and reliable reversible couplers for axis attachment, available with a hydraulic locking system.

AVAILABLE IN A HYDRAULIC  
S+ VERSION ONLY



## The advantages of the S+ hydraulic coupler with axis attachment

- + First axis secured "as soon as possible"
- + Engaging shape to facilitate attachment
- + "Locking complete" indicator
- + Hydraulic locking without leaving the cab
- + Tool reversibility
- + Adherence to the original kinematics and manufacturer's load charts
- + Available as a Nordic S Standard et S+ system only



# Specification

At the heart of this new range are **three patents** that embody ACB+'s commitment to excellence and safety. These innovations guarantee **that the first axis is secured "as soon as possible"**, ergonomic hooks make the insertion of tools easier thanks to an engaging shape, as well as **a clear and reliable indication of proper locking conditions**.

S+ couplers represent not only innovation, but also continue the performance and reliability associated with ACB+'s Morin Original system **by adhering strictly to the original kinematics and manufacturers' load charts while offering a simple and robust solution**.

**Its design provides reversibility for all tools**, thereby offering increased versatility on site.

**Securing the first axis:** S+ couplers are equipped with a dual locking system to ensure optimum safety. In accordance with standard EN474-1, the first lock **engages automatically as soon as the tool's first axis is inserted in the hooks**, thereby preventing any risk of tipping during the hitching operation. The second hydraulic lock is controlled by the operator when the second axis is in place.

**Patented engaging shape:** S+ couplers' hooks have an engaging shape **that provides a convenient angular tolerance, thereby making the tool hitching process easier** even when the hooks are unfavourably positioned in relation to the coupler.

**"Locking complete" indicator:** A single indicator on the coupler **confirms that the axes are in place and that the locks are correctly engaged**, thereby guaranteeing complete safety during hitching operations.

**Hydraulic version:** S+ couplers are available in a hydraulic version only.

**Overpressure protection:** The actuators integrated into S+ couplers are equipped with a safety valve and a pressure relief valve to prevent any issues during use, thus ensuring the system's durability and safety.

These features make S+ couplers a robust and secure solution offering industry professionals an advanced solution tailored to their most exacting requirements.



## Classic coupler range **S+**

SIZE	TONNAGE	TOOL AXIS DIAMETERS [mm]	TOOL CENTRE DISTANCE [mm]	HYDRAULIC VERSION
S+30/180	800 kg – 2 t	30	200	S+30 scheduled for release in 2025
S+40/200	2 t – 6.5 t	40	300	S+40 scheduled for release in 2025
S+45	5 t – 10 t	45	430	S+45
S+50	6 t – 11 t	50	430	S+50
S+60	10 t – 18 t	60	480	S+60 scheduled for release in 2025
S+70	18 t – 30 t	70	600	S+70 scheduled for release in 2025

# TILTING FREE COUPLERS

These couplers, which are available in a mechanical or hydraulic version, tilt up to  $\pm 90^\circ$  and include the properties of the Morin Original system at the bottom.



AVAILABLE IN HYDRAULIC OR MECHANICAL VERSIONS



## The advantages of the Morin Original system mechanical and hydraulic tilting coupler with power unit

- + Power driven tilt
- + The power unit's internal components operate permanently in an oil bath, which minimises maintenance operations
- + Very easy to install, thanks to the use of an auxiliary line for tilting (proportional control highly recommended)
- + Compact coupler for working in narrow trenches
- + Available as a Morin Original system and CW Verachtert, L Lehnoff, Nordic S Standard, S+ and original Liebherr SW systems



# Maximum performance

The compact design tilting coupler with power unit is the perfect coupler for public works, and for creating and maintaining embankments, as well as for all your finishing work. **It will enable you to use smaller trenches and to access more extreme positions.**

The patented tilt function is based on an **elliptical piston and a single helical gear system** unlike other tilt systems, which comprise two helical gear systems and are often much larger.

All the power unit's internal components parts are lubricated with hydraulic oil, which keeps maintenance to a minimum. The power unit is protected by robust mechanical stops at its travel limits.

To ensure that the tilt is maintained, a dual non-return valve may be installed as an option.

Installation is quick and easy due to the use of a simple proportional auxiliary line from the excavator.



## Tilting free coupler range

MODULE	TONNAGE	ANGLE	MECHANICAL VERSION	HYDRAULIC VERSION
M0	1 t – 2 t	2 x 90°	RA02-180	-
M1	1.5 t – 2 t	2 x 90°	RA02-180	RA02-180
	2 t – 3.5 t	2 x 90°	RA045-180	RA045-180
M2	3.5 t – 5 t	2 x 90°	RA045-180	RA045-180
	4.5 t – 5.5 t	2 x 90°	RA07-180	RA07-180
M3	5.5 t – 6.5 t	2 x 90°	RA07-180	RA07-180
	6.5 t – 7.5 t	2 x 90°	RA10-180	RA10-180
M4	7.5 t – 10 t	2 x 90°	RA10-180	RA10-180
M5	10 t – 14 t	2 x 70°	-	RA14-140
	13 t – 15 t	2 x 70°	-	RA19-140
M6	15 t – 19 t	2 x 70°	-	RA19-140
	19 t – 23 t	2 x 70°	-	RA25-140

# ROTATING FREE COUPLERS

## ROTO+

These couplers, which are available in a mechanical or hydraulic version, rotate by 360° and include the properties of the Morin Original system at the bottom.

AVAILABLE IN HYDRAULIC OR MECHANICAL VERSIONS



## The advantages of the Morin Original system mechanical or hydraulic rotating coupler

- + 360° rotation thanks to its hydraulic power unit and its wheel and worm gear
- + Hydraulic rotary joints (optional for mechanical couplers and standard for hydraulic couplers) and electrical rotary joints (optional) are available for attaching all types of tools
- + Very easy to install, thanks to the use of a single auxiliary line for rotation (proportional control highly recommended)
- + Compact and robust design facilitating the occasional use of a hydraulic breaker
- + Fully sealed casing ensuring total protection of the ring
- + Rotation sensor for the optional built-in 2D/3D guidance system
- + Available as a Morin Original system and CW Verachttert, L Lehnhoff, Nordic S Standard, S+ and original Liebherr SW systems



**ACHIEVE ALL YOUR AMBITIONS  
WITH THE ROTATING COUPLER!**

## Did you know?

**A rotating coupler offers far more possibilities than a tilting coupler.**

**Compared to a tiltrotator**, it allows you to perform more than 80% of the work of a tiltrotator with real benefits in terms of performance, operation and integration into the machine. Lighter, more compact, greater hydraulic flow, easier to install, more economical, the rotating solution offers real advantages.

**Compared to a tilting coupler**, it offers you greater mobility, as well as the precision required for public works applications, embankments with complex shapes, trench filling, mounding and riprap work, pallet handling and finishing work around obstacles.

**Compared to a classic coupler**, it offers you a time saving of 10% for excavation, 30% for public works and 50% for landscaping work, simply because you can handle even the minutest details of your finishing work.

- **Tool reversibility in half a turn:** without removing your tool, it changes from being used as a hoe bucket to a shovel in seconds.
- **Rotation that tilts the bucket:** thanks to the combination of rotation, the bucket kinematics and that of the rotating coupler, you can perform all your embankment and trench filling work.

The rotating coupler **is the perfect response to your sites' need for versatility.**



**ROTO+THE COUPLER DESIGNED  
AND DEVELOPED BY ACB+**



## Performance and Reliability

The ROTO+ rotating coupler has a **compact design**, preserving the machine's performances to the greatest extent. Thus the force at the tine is still greater than with a tilting coupler or a tiltrotator.

The irreversible principle of the **wheel and worm gear system** naturally allows the tool to be always maintained in the correct position.

A **hydraulic rotary joint facilitates high throughputs** and the use of a grapple, cutter and hydraulic breaker. The hydraulic rotary joint is optional for all mechanical couplers. An optional **electrical rotary joint is available** for the transmission of electric signals.

**No major conversion in the cab and no extra hydraulic equipment is needed for installation.** As most machines are factory fitted with two auxiliary lines, the highest speed line is thus kept for supplying tools, such as hydraulic breakers.

**Driver familiarisation is quick and easy** thanks to their compact design and control via a single hydraulic function in the cab.

The ROTO+ rotating coupler is compatible with the majority of 2D/3D guidance systems. A rotation sensor can also be incorporated in order to benefit from this over-equipment.

## Rotating free coupler range **ROTO+**

MODULE	TONNAGE	ROTATION	MECHANICAL VERSION		HYDRAULIC VERSION WITH ROTARY JOINT
			WITHOUT ROTARY JOINT	WITH ROTARY JOINT	
M1	2 t - 3.5 t	360°	R04-0	R04-4	R04-4
M2	3.5 t - 5.5 t	360°	R06-0	R06-5	R06-5
M3	5.5 t - 7.5 t	360°	R11-0	R11-5	R11-5
M4	7.5 t - 10 t	360°	R11-0	R11-5	R11-5

Other models, for machines above 10 t and/or other coupling systems, available on request, [acbplus.com](http://acbplus.com)

# TILTROTATORS

## NOX INSIDE

# FREE COUPLERS

These multi-function couplers, which are available in a hydraulic version, are equipped with 360° rotation, ±50° tilt and include the properties of the Morin Original system at the bottom.



AVAILABLE IN  
A HYDRAULIC VERSION



### The advantages of the Morin Original System hydraulic tiltrotator <sup>nox inside</sup>

- + Multi-function coupler with 360° rotation and ±50° tilt
- + Proportional control system for quick and precise working
- + Hydraulic extra functions for controlling tools incorporated into the tiltrotator thanks to a factory-fitted hydraulic rotary joint.
- + Optional electrical rotary joint
- + Low construction height, minimising the loss of breakout force for all tools attached to the tiltrotator
- + Available as a Morin Original system and CW Verachttert, L Lehnoff, Nordic S Standard, S+ and original Liebherr SW systems



# Maximum functions

The tiltrotator is the most complete coupler in terms of functions, and is used on hydraulic excavators from 3.5 to 25 tons.

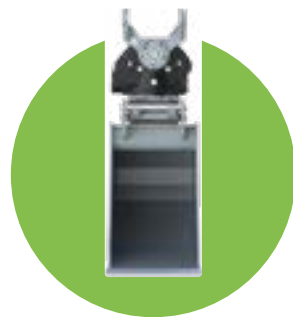
The 360° rotation and ±50° tilt **allow the tool** attached to the coupler **to be moved simultaneously in all directions**.

Our tiltrotator <sup>nox inside</sup> is tried and tested and is **the most compact on the market**. Unlike other tiltrotators **no parts protrude beyond the coupler, allowing you to work in narrow trenches or in a forest environment**.



## Tiltrotators with exposed actuators

- High structure to ensure sufficient clearance
- Exposed actuators, which are susceptible to impacts, particularly in narrow trenches
- Necessary maintenance of articulation bearings and actuator bearings
- The assembly is overhead and exposed depending on the model.



## Tiltrotator <sup>nox inside</sup> without exposed actuators

With the patented tilt system:

- The assembly is compact and fully integrated, The height is reduced by design
- the coupler's width is smaller by around 120 mm depending on the model
- The tilting torque is constant over the entire angular range

## Tiltrotator <sup>nox inside</sup> without actuators

The patented tilt function is based on an elliptical piston and a helical gear system to provide the tilt function. **This arrangement allows for a low construction height**, minimising the loss of breakout force for all tools attached to the tiltrotator, with no **visible actuators**.



**THE MOST COMPREHENSIVE  
COUPLER IN TERMS  
OF FUNCTIONS**

# Robust and proven positioning

The wheel and worm gear system of the slewing ring is generously dimensioned to absorb breakout forces. It operates in a completely sealed oil bath, with no maintenance required for a long working life.



## DF4 control system

The DF4 control system needs two dual-action hydraulic circuits. (DF4 i.e. 4 connecting hoses).



Rotation and tilting can be executed simultaneously with the machine's original proportional control system.

The DF4 cab control unit can also electrically divert the tilt function to:

- Two hydraulic extra functions to supply your hydraulic tools
- or one extra function for your tool and the other for the optional integrated grapple, if required.

Naturally, the hydraulic rotary joint is factory fitted, an optional electrical rotary joint is available.

## Machine requirements for the DF4

A high-speed auxiliary line with proportional control to control tilting, as well as the extra functions

A medium-speed auxiliary line with proportional control to control rotation

One ON/OFF button per extra function is required on the existing levers to control their switching. If necessary, ACB+ can provide supplementary buttons as an option.



## Tiltrotator nox inside free coupler range

MODULE	TONNAGE	HYDRAULIC VERSION
M2	3.5 t – 5.5 t	TR07*
M3	5.5 t – 7.5 t	TR11*
M4	7.5 t – 10 t	TR11*
M5	10 t – 12.5 t	TR14
	12.5 t – 15 t	TR19
M6	15 t – 19 t	TR19
	19 t – 24 t	TR25

\*Available in a mechanical version on request

# Choosing the right type of quick coupler for your operations

A specification form is available on [acbplus.com](http://acbplus.com) to help you configure your coupler.

		CLASSIC COUPLER	COUPLER WITH AXES <i>S+</i>	TILTING COUPLER WITH POWER UNIT	ROTATING COUPLER <i>ROTO+</i>	DF4 TILTROTATOR <small>NOX INSIDE</small>	SOLUTIONS NOT RECOMMENDED BY ACB+	
							DF4 SANDWICH TILTROTATOR <small>NOX INSIDE</small>	CSP SANDWICH TILTROTATOR <small>NOX INSIDE</small>
Degree of freedom		Fixed	Fixed	±90° or ±70° tilt (depending on the model)	360° rotation	360° rotation and ±50° tilt (90° combined movement)	360° rotation and ±50° tilt (90° combined movement)	
Machine	Break out force (BOF)	++	++	++	++	+	+	+
	Lifting capability	++	++	++	++	+	+	+
	Equivalent jib offset	0	0	0	++	++	++	++
	Machine equipment	1 QC line*	1 QC line*	1 QC line* + 1 auxiliary line	1 QC line* + 1 auxiliary line	1 QC line* + 2 auxiliary lines	1 quick coupler line + 2 auxiliary lines	
	Hydraulic flow rate at the rotary joint for tools	0	0	0	++	+ (standard version) ++ (High Flow version)	Low to very low or High Flow option	
	Thumb compatibility	++	++	0	0	0	0	0
	Driver familiarisation time	0	0	2 to 3 days	1 week	3 to 4 weeks	3 to 4 weeks	4 to 6 weeks
	Installation time	1 to 4 hours	1 to 4 hours	4 to 8 hours	4 to 8 hours	6 to 12 hours	7 to 20 hours	16 to 36 hours
	Price	€	€	€€	€€€	€€€€	€€€€€	€€€€€€
	Use of tilt + rotation + extra function in simultaneous proportional mode	Not applicable					No	No
Tools	Mound working	0**	++	0**	++	++	++	++
	Max. bucket width	++	++	+	+	+	++ (removal)	++ (removal)
	Backhoe claw compatibility	++	++	0	0	0	0	0
	Universal ditch cleaning bucket	+	+	+	++	++	++	++
	Pallet forks (excavator with valves)	++	++	+	+	+	++	++
	Sorting grapple	Rotating	Rotating	Rotating	Fixed	Fixed	Fixed	Fixed
	Rock excavation use	Occasional	Occasional	Prohibited	Prohibited	Prohibited	Continuous with removal	Continuous with removal
	Hydraulic breaker use	Continuous	Continuous	Prohibited	Occasional	Prohibited	Continuous with removal	Continuous with removal
Compatible coupling system	Morin Original	S+   S	Morin Original   CW   L   S   S+	Morin Original   CW   L   S   S+   SW	Morin Original   CW   L   S   S+   SW	Morin Original   CW   L   S   S+   SW	Morin Original   CW   L   S   S+   SW	

Key: 0 = Incompatible or unsuitable use | + = Average performance | ++ = Maximum performance | \* Quick coupler line | \*\* Mound working possible with reversible kit or mound tool

# COUPLERS AS WELL AS TOOLS

## A vast range of tools for all quick coupling systems

These products can be adapted to other common quick coupling systems on request. Our eight design department staff will design the product that meets your needs and is compatible with your machines, based on our entire range of tools.

This comprehensive approach will enable ACB+ to be your one-stop supplier for equipping complete machines and/or supplying additional couplers and tools for existing equipment, **whatever your quick coupling system.**



## CSR policy

We have been **committed to a QSE-CSR process since March 2019**, and have recruited a QSE Coordinator. We have allocated resources to assess our actions and developed a **continuous improvement programme**.

- We always opt for suppliers that are **geographically close** with the aim of integrating into and invigorating the local industrial and economic fabric, as well as minimising our environmental impact. As a result, almost 60% of our purchases are regional and 85% are French.
- **Social responsibility:** As for our customers, we make every effort to provide safe working conditions for our employees.
- **Environmentally sustainable development,** in particular by sorting all our waste.
- **ACB+ is committed to its community and local development:** socially committed organisation in the public interest, taking account of local conditions and regional development by sponsoring a number of clubs and associations.

# Our remote and in-the-field customer service

Your productivity is one of our key priorities and our aim is to always provide quick and professional assistance, irrespective of the product for which you need our help.

Please don't hesitate to make use of our services, to help you find the product that best meets your needs or for answers to technical questions or those relating to use, **our team is there to provide the technical support you need.**

We do everything we can to minimise your machine down times, so if you **need a spare part, we offer next-day delivery to your dealer for all orders placed before noon (in more than 85% of cases).**

We train and support our dealers and partners, to ensure they are able to offer the best possible service.

We provide field support, either directly or by means of one of our local partners in your area.

**Most of the time, any issues that may arise on the ground are managed by your dealer.** However, you may need our help, and our team is available as a backup resource.

**Please don't hesitate to call us** on +33 4 74 66 82 49, or contact us via our [acbplus.com](http://acbplus.com) website



## Warranty

Please follow the recommendations for use and maintenance appearing in the User Manual, which is supplied with our products. This allows you to benefit from a **two year warranty for all our couplers** and tilting and rotating couplers or tiltrotators, and a **one year warranty for tools, excluding parts subject to wear.**

## Where to find our products?

Our products are available from all our dealers in France and the Benelux countries. Just ask your dealer for ACB+ products.

Our products are also available through the main national leasing networks and from regional equipment leasing companies.

## A strong partnership with dealers, manufacturers and leasing companies

Our sales policy is one of our strengths because it is clear and has not changed for years. This has allowed us to build a real relationship of trust with our partners.

We have chosen to work closely with dealers, who provide a local service for users. They are your main contacts and provide advice, as well as product recommendations, and also supply spare parts.

We also sell our products via manufacturers in France and in other countries, and PW equipment importers, who install our products for some of their customers.

We have a loyal, long-standing relationship with leasing companies and provide a customised logistics service for their branches.

Finally, if you are a user and have any questions or experience any issues using our products, please contact us for an immediate and effective response.





ZI - 249 Route de Charentay  
69220 Saint-Lager, France

Tel.: +33 (0)4 74 66 82 49  
Fax: +33 (0)4 74 66 82 83

[acbplus.com](http://acbplus.com)  
[contact@acbplus.com](mailto:contact@acbplus.com)

