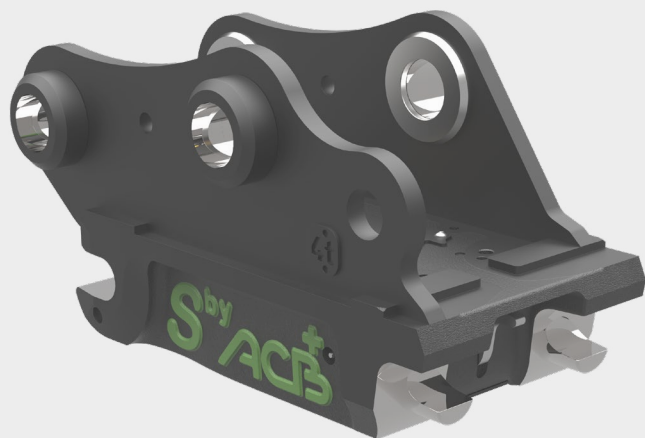


PRODUCT SHEET

S+



ALL OF ACB+'S KNOW-HOW AND EXPERIENCE IS NOW AVAILABLE IN THE S SYSTEM.

- + Compatible with implements with S-type pins.
- + First axis secured "as soon as possible" (in accordance with EN474-1 and ISO13031),
- + Engaging shape to facilitate pickup
- + Indicator for proper locking
- + Hydraulic locking without leaving the cabin
- + Tool reversibility
- + A single double-acting hydraulic control line.
- + In respect of the original kinematics and the manufacturers' load table,
- + Size selection by means of a proprietary algorithm.

ACB+, renowned for its Morin Original couplers, is taking a new step forward by launching its latest innovation: **the S+ coupler range.**

Specifically designed for **hydraulic excavators weighing 2 to 30 tons and compatible with tools equipped with axes to the "S" standard**, these new couplers represent the result of intensive work focused on innovation and performance.

At the heart of this new range are **three patents** that embody ACB+'s commitment to excellence and safety. These innovations ensure **securing the first axis "as soon as possible"**, ergonomic hooks facilitating tool insertion with an engaging shape, as well as **clear and reliable indication of proper locking conditions.**

Not only do S+ couplers embody innovation, but they also perpetuate the performance and reliability associated with ACB+'s Original Morin system **by meticulously adhering to the original kinematics and load charts of manufacturers while offering a simple and robust solution.**

Its design allows for **the reversibility of all tools**, thus providing increased versatility on the construction site.

S+ COUPLER FEATURES

- **Securing the 1st axis:** S+ couplers are equipped with double locking to ensure optimal safety. The first locking mechanism, compliant with EN474-1 standards, **engages automatically as soon as the first axis of the tool is inserted into the hooks**, thereby preventing any risk of falling during the hooking operation. The second hydraulic locking is controlled by the operator when the second axis is in place.
- **Patented engaging shape:** The hooks of S+ couplers have an engaging shape **that provides comfortable angular tolerance, thus facilitating the process of attaching tools** even when they are in unfavorable positions relative to the coupler.
- **Good locking indicator:** A unique indicator on the coupler **confirms that the axes are in place and the locks are correctly engaged**, ensuring complete safety during hooking operations.
- **Hydraulic version:** S+ couplers are only available in a hydraulic version, requiring a single double-acting control line with identical pressure for locking and unlocking, ensuring easy commissioning.
- **Protection against overpressure:** The cylinders integrated into S+ couplers are equipped with a safety valve and pressure limitation to prevent any problems during use, ensuring the durability and safety of the system.

These features make S+ couplers a robust and secure solution, offering professionals in the industry an advanced and tailored solution to their most demanding needs.

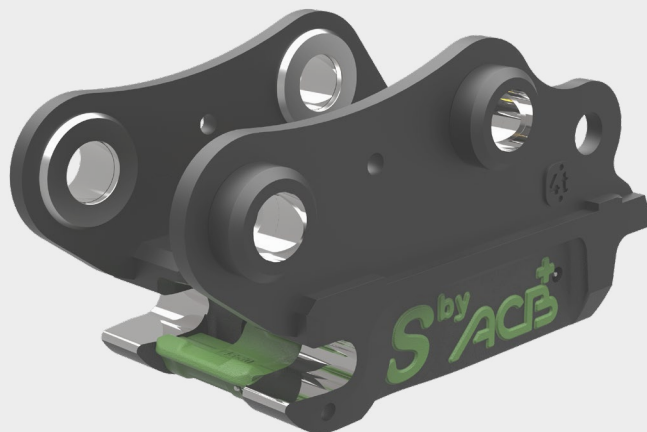


Good locking indicator



PRODUCT SHEET

S+



ALL OF ACB+'S KNOW-HOW AND EXPERIENCE IS NOW AVAILABLE IN THE S SYSTEM.

- + Compatible with implements with S-type pins.
- + First axis secured "as soon as possible" (in accordance with EN474-1 and ISO13031),
- + Engaging shape to facilitate pickup
- + Indicator for proper locking
- + Hydraulic locking without leaving the cabin
- + Tool reversibility
- + A single double-acting hydraulic control line.
- + In respect of the original kinematics and the manufacturers' load table,
- + Size selection by means of a proprietary algorithm.

S+ HYDRAULIC COUPLER RANGE

SPECIFICATIONS	S+30	S+40	S+45	S+50	S+60	S+70	UNIT
Weight of load-bearing machine	0.8 à 2	2 à 6.5	5 à 10	6 à 11	10 à 18	18 à 30	[t]
Max. breakout torque	15	35	88	88	160	320	[kN.m]
Max. breakout force ISO	20	40	73	73	130	200	[kN]
Tool axis diameters	30	40	45	50	60	70	[mm]
Tool center distance	200	300	430	430	480	600	[mm]
Tool width	180	200	290	270	340	450	[mm]
Max. dipperstick width	150(*)	200(*)	270	250	330(*)	430(*)	[mm]
Weight (depending on machine)	(*)	(*)	100	95	(*)	(*)	[kg]
CMU (coupling)	2	3	4	4	5(*)	5+5 (*)	[t]
Operating pressure	200	200	200	200	200	200	[bar]
Flow rate	2	4	5	5	6	6	[l/mn]
Hydraulic layout	(*)	(*)	1/4"	1/4"	(*)	(*)	BSP

(*) Values subject to change

The S+45 and S+50 couplers will be available starting from autumn 2025, while the S+30, S+40, S+60, and S+70 couplers will gradually complement this new range.

Our range of S+ couplers **reuses the manufacturer's balanced rocker arm axes.**

Scan this QR Code to download the product sheet

