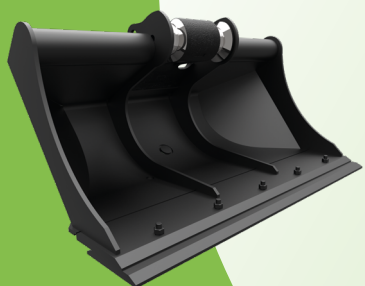


# TOOLS ACB+

For mini-excavators, excavators  
and loaders



UNIVERSAL DITCH  
CLEANING BUCKET



FRONT AND REAR RAKE



HOE BUCKET



GRAPPLE BUCKET



SORTING GRAPPLE



PALLET FORKS



A comprehensive, multi-system range tailored to your needs

**ACB+**  
Free your productivity



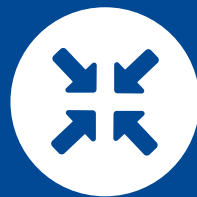
## Why choose ACB+ for your attachments?



A firm belief in our products offering efficient and robust attachments to boost your productivity.



Easy-to-use products ensuring the safety and comfort of operators.



A comprehensive and customised range of innovative and patented products.



Individual support from our 100% France-based team.



Responsive customer service with next-day spare parts delivery to your dealer before noon.

# Contents

<b>A Multi-System and Customisable Range</b>	<b>4</b>	<b>Trapezoidal Buckets for Mini-Excavators and Excavators</b>	<b>18</b>
<b>A Design Service for Customised and Specific Tools</b>	<b>4</b>	<b>Specific Tools for Mini-Excavators and Excavators</b>	<b>19</b>
<b>The Morin Original System</b>	<b>6</b>	<b>Handling and Lifting Tools for Mini-Excavators and Excavators</b>	<b>20</b>
<b>Possible Coupling Systems for Tools</b>	<b>7</b>	<b>Adapters for Mini-Excavators and Excavators</b>	<b>21</b>
<b>Hoe Buckets for Mini-Excavators and Excavators</b>	<b>9</b>	<b>Reversibility Solutions for the Morin Original System</b>	<b>22</b>
<b>Ditch Cleaning Buckets for Mini-Excavators and Excavators</b>	<b>13</b>	<b>Selecting the Right Module and Tools for Your Excavator</b>	<b>23</b>
<b>Grapples for Mini-Excavators and Excavators</b>	<b>15</b>	<b>Tools for Loaders</b>	<b>24</b>
<b>Teeth for Mini-Excavators and Excavators</b>	<b>17</b>	<b>Tools as Well as Couplers</b>	<b>26</b>

# A MULTI-SYSTEM AND CUSTOMISABLE RANGE

THE XHD QUARRY BUCKET CONFIGURATOR IS AVAILABLE ON [ACBPLUS.COM](https://www.acbplus.com), TO HELP YOU CUSTOMISE YOUR TOOLS.

## A design service for customised and specific tools

**As a specialist in customised products, we design your tailor-made product** based on your specifications.

From mini-excavators to production excavators, from tractor shovels to loaders, **ACB+ has the tool you need and which we will adapt to suit your requirements.**

Our eight design department staff will design the product that meets your needs and is compatible with your machines, based on our entire range of tools. Irrespective of whether a specific tool is required for road, forestry or agricultural work, for road and network maintenance work or for quarries and tunnels, we will find the right solution.

We will provide you with a real 3D sketch of your tool for approval before we start production.

If you would like to customise a bucket and see the full range of options that we offer, **you can use our bucket configurator for excavators.** Many parameters, such as the quick coupling system or conventional mounting, bucket profiles, width, capacity, level of abrasion protection, wear parts, specific equipment (ball-guide, fairings, perforated bases) will be factored in by our design department, to configure the perfect product for you.

**All our tools can be customised to meet your needs, please don't hesitate to contact us.**



# A vast range of tools for all quick coupling systems

All our tools are available for direct fit or for Morin Original, CW Verachttert, Lehnhoff, Nordic S Standard, S+, Original Liebherr SW and many other quick coupling systems!



These products can be adapted to other common quick coupling systems on request.

This comprehensive approach will enable ACB+ to be your **one-stop supplier** for equipping complete machines and/or supplying additional couplers and tools for existing equipment, **whatever your quick coupling system.**

**A COMPREHENSIVE, MULTI-SYSTEM RANGE  
THAT IT IS COMPLETELY CUSTOMISABLE**



# THE MORIN ORIGINAL SYSTEM



**FOR A PLAY-FREE COUPLER/  
TOOL CONNECTION**

## A well-deserved reputation

Designed by the Morin brothers in the nineties, ACB+ has developed **the Morin Original coupling system for use with hydraulic excavators from 0.8 tons to 50 tons** in eight sizes known as “modules”.

These couplers are **patented and compliant, in terms of safety, with the latest EN474-1 and 5 and ISO13031 standards.**

As a component manufacturer in its own right, ACB+ offers you **couplers** compatible with your machine **in accordance with the manufacturer’s kinematics** and **an extremely wide range of robust and reliable tools** designed and approved by our design department.

**Control devices for hydraulic quick couplers are available** for your machine and we endeavour to provide you with the best advice and support to ensure completely safe incorporation of our products into your machine.

ACB+ guarantees the compatibility of all its tools, which it has been producing for more than ten years.

However, should our couplers have tools made by third parties attached, ACB+ is unable to guarantee compliance with safety standards. The use of such tools could seriously compromise safety, when interacting with the safety devices on our couplers, in terms of the dimensions of the connection, collisions or simply the intrinsic mechanical strength of tools that may be supplied by third parties.

ACB+’s couplers brochure presents the features of **its classic couplers**, as well as its latest products, its **free couplers**: Tilting couplers, rotating couplers and tiltrotators.

# POSSIBLE COUPLING SYSTEMS FOR TOOLS



All our tools are available for direct fitting on your vehicles, as well as on the majority of common quick couplers.

This comprehensive approach will enable **ACB+** to be your one-stop supplier for equipping complete machines.

To ensure an optimum quality quick coupler / tool connection, we favour the incorporation of original connection kits purchased from the system manufacturer.

If necessary, we may ask you to supply items for incorporation into our tools.(1)

Here is a list of the main quick couplers for which our design department is able to design a tool.

\*Optional hydraulic connectors possible

COUPLER WITH AXIS ATTACHMENT		DEDICATED COUPLING	DIRECT COUPLING MANUFACTURER'S DIMENSIONS
S SYSTEM	OTHER SYSTEMS		
EASY LOCK	ARDEN UA	ARDEN QA	ALL MANUFACTURERS  On examination: sealed bearings available for working under water.
ENGCON*	DROMONE	KLAC	
OILQUICK*	GEITH	LEHNOFF	
ROTOTILT*	LIEBHERR SW*	LEHNOFF SYMLOCK	
SMP	MARTIN*	MBI (CR or AR)	
STEELWRIST*	MILLER	MECALAC ACTIV LOCK	
	MBI	MORIN ORIGINAL	
	VOLVO VAB	VERACHTERT CW	
	VTN		



**ALL OUR PRODUCTS ARE DESIGNED  
IN ACCORDANCE WITH MACHINE  
KINEMATICS**



## A firm belief in our products

### Efficient and reliable products

We believe that **our products must always be 100% efficient**. So optimum compatibility and fine-tuning are never forgotten. All **our products adhere to the original kinematics and load charts** and are **functionally inspected on completion of production** with particular attention paid to welds and their finishes. Robotic welding gives our products **consistent quality and optimum strength**.

### Robust engineering for long-lasting products

To guarantee the high-quality design of all our products, **our design department uses 3D CAD software combined with an efficient technical data management system**.

### Safety is a key priority for us

We are committed to ensuring maximum safety for our customers.

**We comply strictly with all applicable standards** and recognise the impact we can have on improving operators' lives at work and their protection. In addition **we develop and patent product improvements**,

**such as the safety system on our locking cam: the form-lock**. This system is used on all our Morin Original system couplers and is exclusive to ACB+. **It holds the tool firmly on the coupler** and prevents unintentional unhitching. Our couplers also have other functions allowing the tool to be held play-free.



### Instructions and manuals

Our products are supplied with **the technical documentation needed to install and use them properly**.

# HOE BUCKETS FOR MINI- EXCAVATORS AND EXCAVATORS

Due to the multitude of available couplers on the market, we are unable to provide visuals of each tool with each system.

As a result, they are all depicted using the Morin Original system but are, naturally, available for all the other systems.



## HD-XHD hoe bucket

Carrier weights from 800 kg to 35 t or M0 to M7

**The earthworking bucket is the classic excavator tool.** Several widths and wear parts are available for your excavation or earthworking jobs. Bucket with a deep profile, bare to avoid friction in trenches, **it comes with a double base as standard**, to ensure a long working life.

The XHD versions can be customised as required, with the addition of flats, shields, shoes, etc.



## Banana shaped bucket

Carrier weights from 800 kg to 24 t or M0 to M6

**The banana shaped bucket minimises trench widths for laying networks.** This efficient bucket offers a minimum cutting width, with flared sides, and allows a reasonable volume to be excavated, even in earth with a high clay content.

These buckets have conventional bare blade, tine, counter-blade and plane blade options. These buckets have a limited trench depth.



## Skeleton bucket

**Skeleton:** Carrier weights from 800 kg to 35 t or M0 to M7

**Skeleton grid:** Carrier weights from 800 kg to 10 t or M0 to M4

**Skeleton buckets are designed for sorting, screening and sieving materials.**

The bucket mesh is created by the spacing of vertical webs and the gap between horizontal bars (minimum pitch of 50 mm). An alternative to this structure, eliminating the minimum pitch, is to create a grid: the thick base is flame cut to the required mesh dimensions. For this type of product, we offer one or two standard meshes, but a customised design tailored to your needs is preferable.

## Grapple bucket

Carrier weights from 800 kg to 35 t or M0 to M7

**The grapple bucket is an efficient bucket in all situations where the material is difficult to grab using a conventional bucket.** Two independent claws jam the material against the bucket for loading or rockfilling operations. It is controlled by the excavator's conventional auxiliary line and the grippers are held in position by non-return valves.

The basic profile is a grapple bucket, but many options are available here, both for the claws and the actual bucket, such as the skeleton bucket.



**EACH TOOL CAN BE CUSTOMISED TO MEET YOUR NEEDS |**



## Rock handling bucket

Carrier weights from 5.5 t to 90 t or M3 to M7+

**Rock handling needs both gripping and block depositing capabilities.** The rock handling bucket will meet these two needs.

With a robust design, this rock handling bucket has protected sides and a thicker and more advanced blade. We can adapt this tool to your application, incorporating specific guards on the blade, the bucket base or the interior webs.



## Rock ripper bucket

Carrier weights from 10 t to 90 t or M5 to M7+

**The rock ripper bucket has an open, slim profile and a very advanced blade. It is the perfect tool for breaking down rocky walls or tunnel working.** The flat part of the bucket profile allows extracted blocks to be easily moved. This type of bucket can be customised to meet the needs of your site.

## Quarry bucket

Carrier weights from 10 t to 100 t or M5 to M7+

Every rock extraction site is specific. You need the right bucket for your application. **If wear is a real factor for your application, we can offer you a suitably equipped bucket.**

We take particular care when making buckets for use in quarries. Materials are chosen on the basis of weldability and specific procedures are adopted to ensure optimum fatigue resistance: preheating, treatment of HAZs (heat-affected zones) in critical welds, etc.

**A configurator is available on [acbplus.com](http://acbplus.com) to help you define your tool.**





## Front and rear rake

Carrier weights from 800 kg to 35 t or M0 to M7

**The rake is a multi-function forestry and landscaping tool** enabling wood, stumps and other vegetation to be gripped, sorted and loaded.

Its hollow shape allows you to both hold the load and scarify the soil, leaving a clean surface. On **the front and rear back** the vertical webs are extended on the opposite side to **allow you to work with both sides of the rake.**

## Forestry root rake

Carrier weights from 800 kg to 50 t or M0 to M7+

This rake is ideal for creating forest swaths. **It has an aggressive shape for moving stumps and wood.** Its open profile allows you to drag your swaths to the foot of your machine.



## Rake

Carrier weights from 800 kg to 10 t or M0 to M4

**The rake is designed for small landscaping finishing jobs:** levelling, sorting of clods and ground materials, scarification and loosening. Like the gardener's rake, this tool comprises a beam onto which pointed fingers are welded.



## Cemetery bucket

Carrier weights from 800 kg to 3.5 t or M0 to M1

**The cemetery bucket is used for work that needs a vertical wall to be dug** very close to the machine. The cemetery bucket is typically used to dig graves, swimming pools or vertical cavities in small spaces.



# DITCH CLEANING BUCKETS FOR MINI-EXCAVATORS AND EXCAVATORS

Due to the multitude of available couplers on the market, we are unable to provide visuals of each tool with each system.

As a result, they are all depicted using the Morin Original system but are, naturally, available for all the other systems.

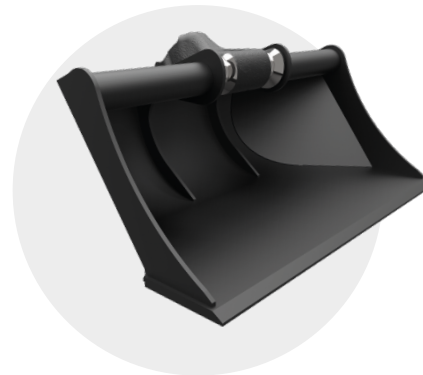
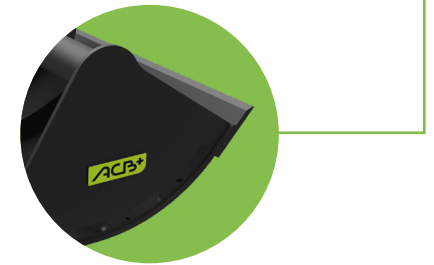


## Standard ditch cleaning bucket

Carrier weights from 800 kg to 50 t or M0 to M7+

The ditch cleaning bucket, also known as the levelling bucket, is a bucket that is wider than it is deep. **Its width allows a broad strip of land to be worked in a single pass. It is designed for cleaning ditches, sloping and levelling large areas.** It is particularly effective due to its excellent top soil reworking capability, for example.

A reversible bolt-on counter blade can be added, to protect the main blade. For larger machines, an optional rear blade provides additional bucket functions, with effective smoothing when the bucket closes and opens.



## Universal ditch cleaning bucket

Carrier weights from 2 t to 24 t or M1 to M6

**The universal ditch cleaning bucket is specially designed for rotating couplers and tiltrotators.** Its bevelled sides avoid bottoming during excavation work and allow you to work closer to pillars, nozzles and other site obstacles. They also facilitate optimum tipping via the bucket corners, when filling trenches, for example. The advanced blade and the flat cutting profile make it **the perfect tool for levelling and public works.**

## Grid ditch cleaning bucket

**Grid ditch cleaning bucket:** Carrier weights from 800 kg to 35 t or M0 to M7

**Skeleton grid ditch cleaning bucket:** Carrier weights from 800 kg to 10 t or M0 to M4

**The grid ditch cleaning bucket allows materials to be sorted over a broad strip of land.** It is designed for sifting and sorting mixed materials. The bucket mesh can be adapted to meet your needs.

There are two available design formats for this type of bucket: one with a plate perforated to create the required mesh size, and another where the mesh is created by bucket profile webs, with a spacing that must be greater than 50 mm. Reversible bolt-on counter-blades are available as an option.



## Tilt ditch cleaning bucket

Carrier weights from 800 kg to 50 t or M0 to M7+

The tilt ditch cleaning bucket offers you a greater degree of freedom. You will be able to create inclines and surfaces that slope in relation to the machine tracks. **It's the ideal tool for road finishing, as well as embankment and landscaping work.**

Our 2 x 45° tilt ditch cleaning buckets have one or two actuators, depending on the size of the machine. A reversible bolt-on counter blade can be added, to protect the main blade. For larger machines, an optional rear blade provides additional bucket functions, with effective smoothing when the bucket closes and opens.

## Vine stock tear out rake

Carrier weights from 800 kg to 15 t or M0 to M5

The vine stock tear out rake is designed specifically for vineyards. **The web spacing allows vine stocks to be extracted and the roots, vine stocks and gravel/soil to be sorted in a single operation.** This tool loosens the soil and stimulates the initial and continued growth of the future plants.



# GRAPPLES FOR MINI- EXCAVATORS AND EXCAVATORS

Due to the multitude of available couplers on the market, we are unable to provide visuals of each tool with each system.

As a result, they are all depicted using the Morin Original system but are, naturally, available for all the other systems.



## Sorting grapple

Carrier weights from 800 kg to 35 t or M0 to M7

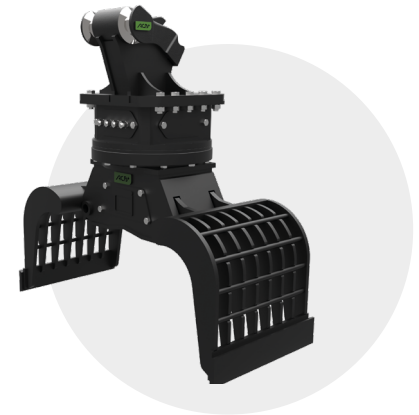
**Our sorting grapples are robust tools, designed for demolition, sorting and handling work.**

They are available with 3 types of shell finish:

- Standard (S): perforated plate,
- Demolition (D): grid shells
- With tines (DE): solid base and blade with tines.

The high strength steel cutting blades can firmly grip all materials, even by the ends of the blade.

There two versions: one is fixed, for use with rotating coupler (to benefit from alignment), the other is rotary, with a power unit and a slewing ring.





## Grapple thumbs

Carrier weights from 800 kg to 24 t or M0 to M6

**Thumbs are the perfect tool for landscaping work, enabling rocks, trunks and branches to be very precisely positioned and loaded.** Their kinematics allow them to be retracted under the arm, out of the work zone, when not in use.

With their robust structure, thumbs are hinged on the beam-end spindle. Their actuator has a discharge valve, allowing them to move away under the force of the bucket. This type of product requires a specific kinematics analysis for both the working position and stowed position.

## Beam grapple

Carrier weights from 3.5 t to 35 t or M2 to M7

**Beam grapples are hydraulic tools designed for handling the beams used to support tunnels and galleries.** They are designed to grip the installed profile and require a prior kinematics analysis in order to be able to reach and align the beams.

These grapples are available in two main versions: fixed and tilting. The tilt grapple enables the beam to be aligned once in position in the roof.



# TEETH FOR MINI-EXCAVATORS AND EXCAVATORS

Due to the multitude of available couplers on the market, we are unable to provide visuals of each tool with each system.

As a result, they are all depicted using the Morin Original system but are, naturally, available for all the other systems.



## Stump planer

Carrier weights from 800 kg to 35 t or M0 to M7

**The stump planer allows you to reduce stump heights below ground level and to work on tree roots in situ.**

The central spike, equipped with front cutters in a left, right or dual position (on each side) will enable you to split the stump and then plane it down. And finally, the rear part, in the form of a vertical cutter, will allow you to cut the main roots around your stump, speed up its decomposition and prevent continued growth.



## Ripper tooth

Carrier weights from 800 kg to 50 t or M0 to M7+

The ripper tooth comprises a heavy duty one-piece central core, with lateral guards, **allowing you to perform your rock excavation work in complete confidence.** It comes equipped with a sharp tooth for optimum penetration. Its rounded rear design provides excellent ground contact for an effective "crowbar" effect. **Your ripper tooth will be useful for all loosening, rock excavation, erosion or settling work on rock layers.**



# TRAPEZOIDAL BUCKETS FOR MINI-EXCAVATORS AND EXCAVATORS

Due to the multitude of available couplers on the market, we are unable to provide visuals of each tool with each system.

As a result, they are all depicted using the Morin Original system but are, naturally, available for all the other systems.



## Creation trapezoidal bucket

Carrier weights from 800 kg to 24 t or M0 to M6

The creation trapezoidal bucket often has a greater opening angle and **is designed for digging profiled ditches**. The bucket's profiled sides allow the tool to turn without bottoming in the ditch.



## Reprofiling trapezoidal bucket

Carrier weights from 800 kg to 24 t or M0 to M6

The reprofiling trapezoidal bucket has a flat section, **on one hand, for smoothing the bottom of the ditch and, on the other hand, to increase the tool's capacity**.

There is a manual trapezoidal bucket alignment device ( $\pm 30^\circ$ ). It allows the turret offset to be corrected, for example, when the excavator is clearing a roadside ditch.



# SPECIFIC TOOLS FOR MINI- EXCAVATORS AND EXCAVATORS

Due to the multitude of available couplers on the market, we are unable to provide visuals of each tool with each system.

As a result, they are all depicted using the Morin Original system but are, naturally, available for all the other systems.



## 4x1 bucket

Carrier weights from 3.5 t to 24 t or M2 to M6

The **4x1 tool** is a **multi-function accessory** designed to offer the following four functions:

- **Loading:** Conventional bucket function
- **Trench filling:** Opening the moving section deposits just the right quantity of gravel in the trench.
- **Gripping:** Opening the moving section allows stumps, branches and stones, etc. to be gripped.
- **Levelling:** Scraping and filling uneven ground as necessary.



## Grader blade

For carriers from 2 to 24 t or M1 to M6

The grader blade is the perfect tool **for levelling large areas while minimising machine movements**. A height-adjustable rear roller allows you to level and compact your materials. Its performance is boosted by pairing it with a rotating coupler or tiltrotator.

## Asphalt cutter

Carrier weights from 5.5 t to 15 t or M3 to M5

**The asphalt cutter can be coupled to the end of your machine, ideally with a rotating coupler or tiltrotator, allowing you to cut your asphalt finely and precisely to the required profile.** The weight of the vehicle generates the necessary pressure for cutting, which is a few centimetres deep.



# HANDLING AND LIFTING TOOLS FOR MINI-EXCAVATORS AND EXCAVATORS

Due to the multitude of available couplers on the market, we are unable to provide visuals of each tool with each system.

As a result, they are all depicted using the Morin Original system but are, naturally, available for all the other systems.



## Pallet forks

Carrier weights from 3.5 t to 35 t or M2 to M7

The pallet forks are a dedicated tool for handling pallets on sites. Depending on the size of the machine, it can lift loads of 800, 1500 or 3000 kg. There are two versions of our pallet forks:

- a simple version, for attachment using a quick coupler only
- a version with a structure on the front blade, allowing the pallet forks to be attached to the blade, for use on sites only.

Depending on the profile of the excavator blade, we are obliged to position the pallet forks on the blade using hooks or secure them using a structure to be welded onto the blade. Their use is not recommended with a tiltrotator, given the risk of the load tipping. Additional valves are also required on the bucket actuator.



## Jib

Carrier weights from 2 t to 10.5 t or M1 to M4

The jib is used to offset the load in front of the coupler. This lifting tool is equipped with a swivel hook, to facilitate alignment of loads on sites. This product is designed in accordance with the safety coefficients for lifting equipment and additional valves are required on the bucket actuator for this application. (It must not be used with tilting or rotating couplers, or tiltrotators).

# ADAPTERS FOR MINI- EXCAVATORS AND EXCAVATORS

Due to the multitude of available couplers on the market, we are unable to provide visuals of each tool with each system.

As a result, they are all depicted using the Morin Original system but are, naturally, available for all the other systems.



## Bolt-on adapter

Carrier weights from 800 kg to 50 t or M0 to M7+

**Tools are attached to a bolt-on adapter using a bolted interface** and its drilling diagram adheres to that required by the tool.

Optimised to reliably and permanently transfer forces, all our bolt-on adapters benefit from machining after welding and reinforcements.



## Suspension link

Carrier weights from 800 kg to 24 t or M0 to M6

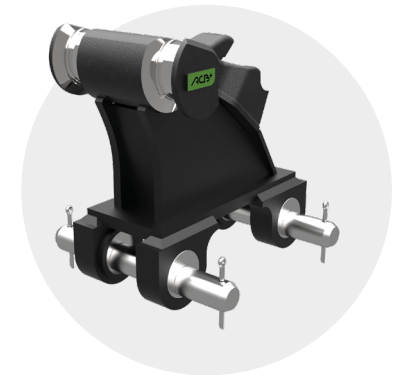
**The suspension link is designed to hold clamshell buckets and earth augers on the end of the machine** in order for them to work correctly on their axis whatever the machine's position.

This interface consists of a yoke providing the connection to the machine by means of a quick coupler and, hinged at the bottom, a suspension. The suspension has two 90° intersecting joints.

## Pin-on adapter

Carrier weights from 800 kg to 10 t or M0 to M4

When the tool has two pins at the top for its attachment, the use of a pin-on adapter is necessary. The pin-on adapter is attached to the breaker or grapple by two pins. The distance between pins can be adjusted using eccentric bearings.



# REVERSIBILITY SOLUTIONS FOR THE MORIN ORIGINAL SYSTEM

## Mound bucket

Equipped with an inverted kit for direct attachment to the coupler in a Morin Original system, for working on a mound.

The hitching and unhitching system is identical to a standard tool. This system is available for all our tools and is fully customisable.



## Reversible kit

Available for all Morin original system tools, from modules 0 to 4, **the reversible kit is only available in a mechanical version and is an intermediate element that allows the tool to be changed over to a shovel in a few steps.** Like the classic coupler, the mechanical reversible kit has features of the Morin Original system, thus hitching and unhitching steps remain the same as for your classic mechanical or hydraulic coupler.



## Rotating coupler

Thanks to **360° rotation**, perform up to 80% of the work of a tiltrotator at a far lower cost. Available in hydraulic or mechanical versions.



## Tiltrotator

The **multi-function coupler with 360° rotation** and  $\pm 50^\circ$  tilt combines manoeuvrability with productivity. Available in a hydraulic version.



# SELECTING THE RIGHT MODULE AND TOOLS FOR YOUR EXCAVATOR



Double-bottoms for hoe buckets have been adopted for the entire bucket range, for both mini-excavators and excavators.



**Choosing the right ACB+ coupler module** for the Morin Original system or other coupling systems (not sold by ACB+) is **extremely important for your machine**. This involves **defining the right quick coupler size based on your machine's specification** to ensure maximum reliability of the Coupler/Tool combination.

**This choice offers you a wide range of tools compatible with your machine** in terms of forces at the tine and bucket capacity.

The selection process generally involves:

- **Defining the application:** GP, HD or XHD (General Purpose, Heavy Duty or Extra-Heavy Duty). By taking account of the soil class in accordance with DIN18300.

The ACB+ range of tools offers outstanding strength and equipment quality.

- **Defining the tine category (Dxx):** Wear parts (tines) are rated for a given maximum force.

**The application and the force developed at the tine define the tine size to be used for the tool.** For more information on the appropriate tine category (Dxx) for your machine, please go to [acbplus.com](http://acbplus.com).

- **Defining the bucket range:** There are generally two bucket profiles per module or machine weight. Profile selection relates, on the one hand, to the bucket radius and, on the other hand, to the machine's lifting capability.

Sizing of the accessory must also take account of the vehicle's overturning limits and the nature of the material worked. **A simple calculation of the total equipment weight = (coupler weight + bucket weight + bucket load weight) will allow you to check that the tool is compatible with your machine** by comparing the value in the load table in accordance with ISO 10567 for your machine in the following cases:

- transversal turret,
- lifting load at maximum range.

The total equipment weight, calculated using ACB+ data, must be less than the value without the bucket or coupler provided in the manufacturer's table\*.

A failure to follow our recommendations invalidates your right to benefit from the statutory warranty. For all specific applications, please contact our technical department first.

\*An Excel tool is available on [acbplus.com](http://acbplus.com) for you to perform this check. For more information, contact us.

# TOOLS FOR LOADERS

These buckets can be adapted to suit your machine, from 2 to 30 tonnes, with direct coupling or using your quick coupler, in accordance with the manufacturer's kinematics and recommendations.

## GP/HD/XHD loader bucket

The loader bucket is best used for loading and recovering large quantities of material.

Our loader bucket range can be broken down into three types of applications:

- **GP: General Purpose**

A lightweight bucket for recovering low abrasive and medium density materials.

- **HD: Heavy Duty,**

A bucket reinforced to last and withstand abrasion

- **XHD: Extra-Heavy Duty,**

An over-equipped bucket for continuous loading applications and extreme abrasion conditions.

Here are some examples of options:

- Blades: bolt-on counter-blades, reversible blades, delta blades, with tines, etc. (GP)
- Shields: welded inter-tine shields, bolt-on shields, etc. (HD, XHD)
- Fairings: with bars, complete, partial, etc. (HD, XHD)
- Bosses: standard, high, guard-irons, etc. (HD, XHD)



## Snow loader bucket

The snow loader bucket has a large volume and a lightweight, job-specific construction.

Its counter-blades, raised base, often with a perforated fairing, make this bucket a particularly popular tool in winter sports resorts.



## Skeleton loader bucket

**Skeleton loader buckets are designed for sorting, screening and sieving materials.** They are particularly robust and benefit from options and our expertise, on request, for customisation to meet your needs.

The bucket mesh is created by the spacing of vertical webs and the gap between the horizontal bars.



**THE DIMENSIONS OF AND OPTIONS FOR THESE BUCKETS ARE DEFINED ON THE BASIS OF YOUR SPECIFICATIONS, TAKING ACCOUNT OF THE TYPE OF MATERIAL TO BE LOADED AND ITS DENSITY**

# TOOLS AS WELL AS COUPLERS

## Your couplers are now free to move

For a number of years now, there has been a growing market for **increasingly mobile tools and couplers** at the end of excavator arms. The way of approaching sites has changed, and today **vehicles perform work right up to the finishing touches**.

ACB+ is now offering a **comprehensive range of couplers that are free to move**, not only with its flagship product, the **Morin Original system but also with CW Verachtert, Nordic S Standard and Original Liebherr SW systems** for machines up to 50 tons.

Classic, tilting, rotating couplers or tiltrotators, you need to make an informed choice. In fact, each added function **offers advantages as well as drawbacks**, which need to be considered to configure the ideal machine/tool pairing.

Within this range of possible attachments for your machines, **ACB+ offers you its expertise and advice as part of a comprehensive approach**, helping you define the most appropriate solution for your needs in line with your machine's capabilities.

**You need the product that meets your needs**, and not always the most highly-equipped.



## CSR policy

We have been **committed to a QSE-CSR process since March 2019**, and have recruited a QSE Coordinator. We have allocated resources to assess our actions and developed a **continuous improvement programme**.

- We always opt for suppliers that are **geographically close** with the aim of integrating into and invigorating the local industrial and economic fabric, as well as minimising our environmental impact. As a result, almost 60% of our purchases are regional and 85% are French.
- **Social responsibility**: As for our customers, we make every effort to provide safe working conditions for our employees.
- **Environmentally sustainable development**, in particular by sorting all our waste.
- **ACB+ is committed to its community and local development**: socially committed organisation in the public interest, taking account of local conditions and regional development by sponsoring a number of clubs and associations.

## Our remote and in-the-field customer service

Your productivity is one of our key priorities and our aim is to always provide quick and professional assistance, irrespective of the product for which you need our help.

Please don't hesitate to make use of our services, to help you find the product that best meets your needs or for answers to technical questions or those relating to use, **our team is there to provide the technical support you need.**

We do everything we can to minimise your machine down times, so if you **need a spare part, we offer next-day delivery to your dealer for all orders placed before noon (in more than 85% of cases).**

We train and support our dealers and partners, to ensure they are able to offer the best possible service.

We provide field support, either directly or by means of one of our local partners in your area.

**Most of the time, any issues that may arise on the ground are managed by your dealer.** However, you may need our help, and our team is available as a backup resource.

**Please don't hesitate to call us** on +33 4 74 66 82 49, or contact us via our [acbplus.com](http://acbplus.com) website



## Warranty

Please follow the recommendations for use and maintenance appearing in the User Manual, which is supplied with our products. This allows you to benefit from a **two year warranty for all our couplers** and tilting and rotating couplers or tiltrotators, and a **one year warranty for tools, excluding parts subject to wear.**

## Where to find our products?

Our products are available from all our dealers in France and the Benelux countries. Just ask your dealer for ACB+ products.

Our products are also available through the main national leasing networks and from regional equipment leasing companies.

## A strong partnership with dealers, manufacturers and leasing companies

Our sales policy is one of our strengths because it is clear and has not changed for years. This has allowed us to build a real relationship of trust with our partners.

We have chosen to work closely with dealers, who provide a local service for users. They are your main contacts and provide advice, as well as product recommendations, and also supply spare parts.

We also sell our products via manufacturers in France and in other countries, and PW equipment importers, who install our products for some of their customers.

We have a loyal, long-standing relationship with leasing companies and provide a customised logistics service for their branches.

Finally, if you are a user and have any questions or experience any issues using our products, please contact us for an immediate and effective response.

# ACB+

Free your productivity

ZI - 249 Route de Charentay  
69220 Saint-Lager, France

Tel.: +33 (0)4 74 66 82 49  
Fax: +33 (0)4 74 66 82 83

[acbplus.com](http://acbplus.com)  
[contact@acbplus.com](mailto:contact@acbplus.com)

